

*“The Wonderware software solution addressed each of our objectives in terms of a short development time, full scalability and easy integration with our existing systems.”*

**Sergey Shpikin**  
Manager of the  
SCADA Department



## Kotlas Pulp and Paper Mill Increases Production and Enhances Quality Control by Implementing Wonderware Production and Performance Management Software Solution

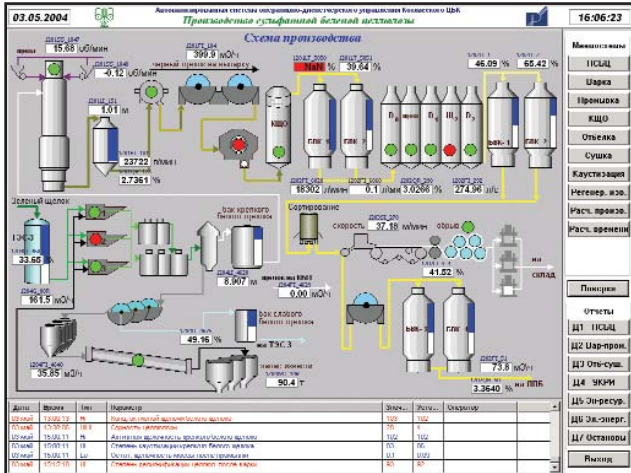
**Koryazhma, RUSSIA** — Kotlas Pulp and Paper Mill (KPPM) belongs to Ilim Pulp, the largest forest industry corporation in Russia. Kotlas Pulp and Paper Mill operates six paper machines and two power plants (for heat and co-generation, respectively). It produces approximately one million tons of pulp for cooking and also high-quality paper products such as kraftliner, fluting, offset paper, sack paper and wallpaper base each year.

Kotlas Pulp and Paper Mill's executives understand the advantages of using the best expertise and advanced technology to maintain high standards of production. For example, Kotlas Pulp and Paper Mill recently invested more than US\$15 million to implement new chlorine-free technologies for pulp bleaching. The Kotlas Pulp and Paper Mill's commitment to high quality standards is also evident in its quality control system, which is certified above the ISO-9001 quality management standard, and environmental management system, which is certified to ISO-14001.

Continuing its commitment to innovative manufacturing practices, Kotlas Pulp and Paper Mill recently installed a new production and performance management software solution from Wonderware, a business unit of Invensys Systems, Inc. The implementation was handled by Wonderware Distributor Klinkmann and a system integration company called Rakurs.

As part of this project, the Kotlas Pulp and Paper Mill's management decided to replace its legacy hardware, improve its engineering operations and deploy more efficient software for the production of bleached hardwood kraft pulp. The paper products operation needed a centralized system that could enable the collection of a wide variety of plant information while providing operators and management with the data they need to maintain high plant productivity and superior product quality.

After evaluating a variety of options, Kotlas Pulp and Paper Mill selected the Wonderware production and performance management solution featuring the Wonderware Industrial Application Server, InTouch HMI software and the IndustrialSQL Server (InSQL) historian.



On the production floor, operations and technology personnel can also access key information via Wonderware's InTouch human-machine interface (HMI) software. InTouch software is designed for real-time visualization and industrial process control. Plant personnel use it to efficiently and securely monitor, analyze and control various process stages throughout the mill.

"Functioning as a cohesive solution, the Wonderware software serves as an invaluable tool, providing critical plant intelligence in real time," said Sergey Gorokhov, Technical Manager for the Rakurs system integration company. "Rather than depending solely on operator experience to know if something was not quite right, Kotlas Pulp and Paper Mill personnel are instantaneously alerted when even the slightest deviation takes place during the processing or manufacturing stages. Kotlas Pulp and Paper Mill's staff can then make the necessary production control improvements. The mill's operators and management can now better identify opportunities to improve product quality."

It was very important to the Kotlas mill to continue performing at maximum capacity immediately after the Wonderware software solution was implemented. The Wonderware Industrial Application Server helped Rakurs achieve this objective because it facilitated remarkably fast application development and deployment and smoothly integrated the diverse hardware with point-and-click accessibility via the mill's intranet. After a two-hour training class, plant operators and management easily incorporated the main system functions into their regular work routines.

Overall, Kotlas Pulp and Paper Mill's investment in the Wonderware production and performance management software solution has already begun to deliver returns and will provide base for implementation of ERP. What's more, the Wonderware software has enabled the company to maintain, and even strengthen, its reputation throughout the international marketplace for producing paper products of outstanding quality.

**Wonderware Software in action at Kotlas**

"Of all the solutions that we researched, Wonderware's technology proved to be the most promising in meeting our mill's specific needs," said Sergey Shpikin, Manager of SCADA department. "The Wonderware software solution addressed each of our objectives in terms of a short development time, full scalability and easy integration with our existing systems."

The Wonderware Industrial Application Server, which is built on the ArchestrA industrial automation and information software architecture, integrated the mill's diverse automation tools from a variety of vendors and created one control and reporting system to centralize production and performance management.

Wonderware's IndustrialSQL Server real-time plant historian is used by the Kotlas Pulp and Paper Mill's top managers as well as specialists from different departments throughout the mill. The historian collects plant information at very high data rates, while using minimal storage capacity. With the immediacy of real-time data, the Kotlas Pulp and Paper Mill staff can make fast, well-informed decisions that maximize pulp production.

WW\_sstory\_Kotlas\_en\_1210



www.wonderware.fi

**Helsinki**  
tel. +358 9 540 4940  
automation@klinkmann.fi

**St. Petersburg**  
tel. +7 812 327 3752  
info@wonderware.ru

**Moscow**  
tel. +7 495 641 1616  
info@wonderware.ru

**Yekaterinburg**  
tel. +7 343 376 5393  
info@wonderware.ru

**Samara**  
tel. +7 846 342 6655  
info@wonderware.ru

**Kiev**  
tel. +38 044 495 33 40  
info@wonderware.com.ua

**Riga**  
tel. +371 6738 1617  
info@wonderware.lv

**Vilnius**  
tel. +370 5 215 1646  
info@wonderware.lt

**Tallinn**  
tel. +372 668 4500  
info@wonderware.ee

**Minsk**  
tel. +375 17 200 0876  
info@wonderware.by